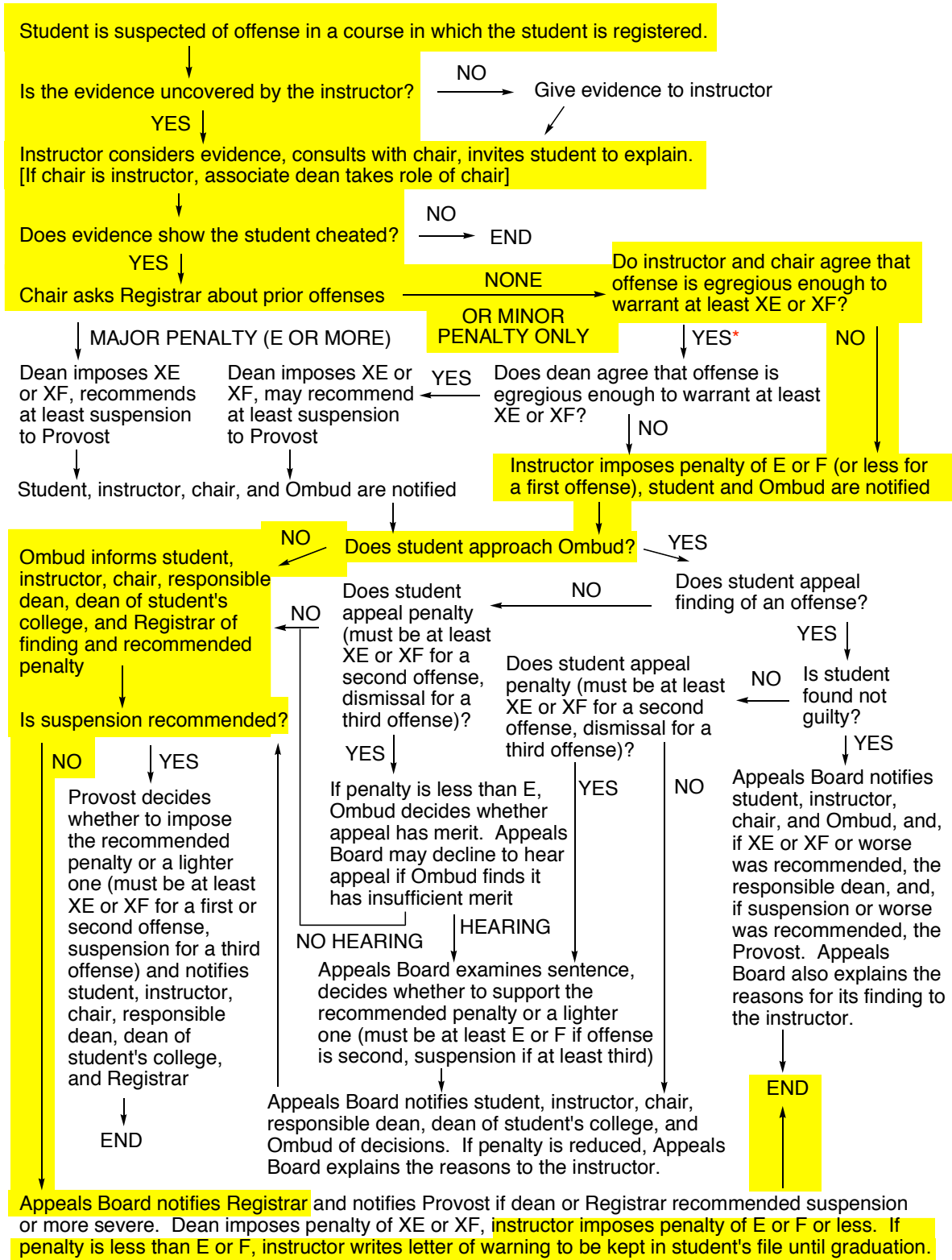
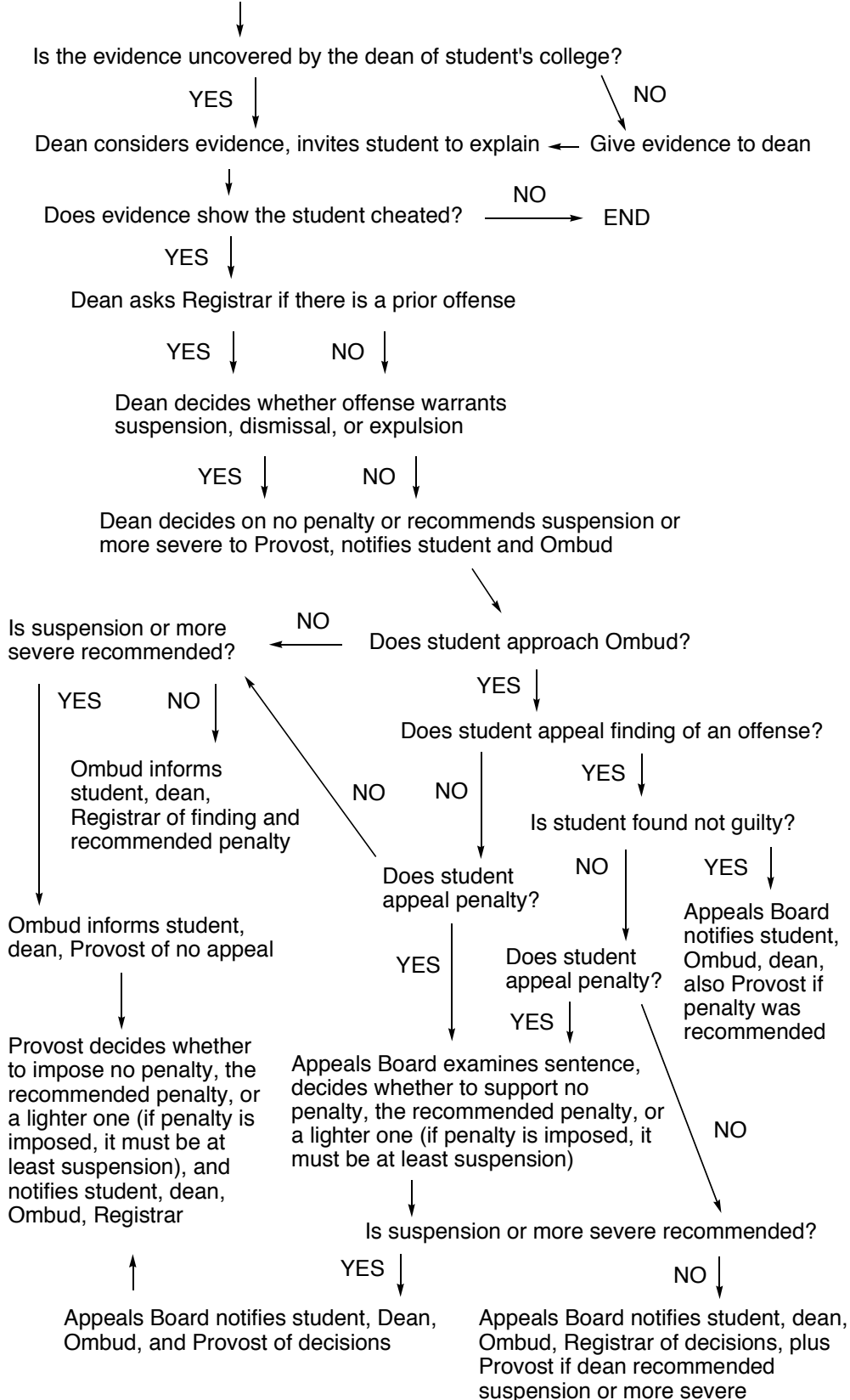


Most common scenario is shown in yellow.

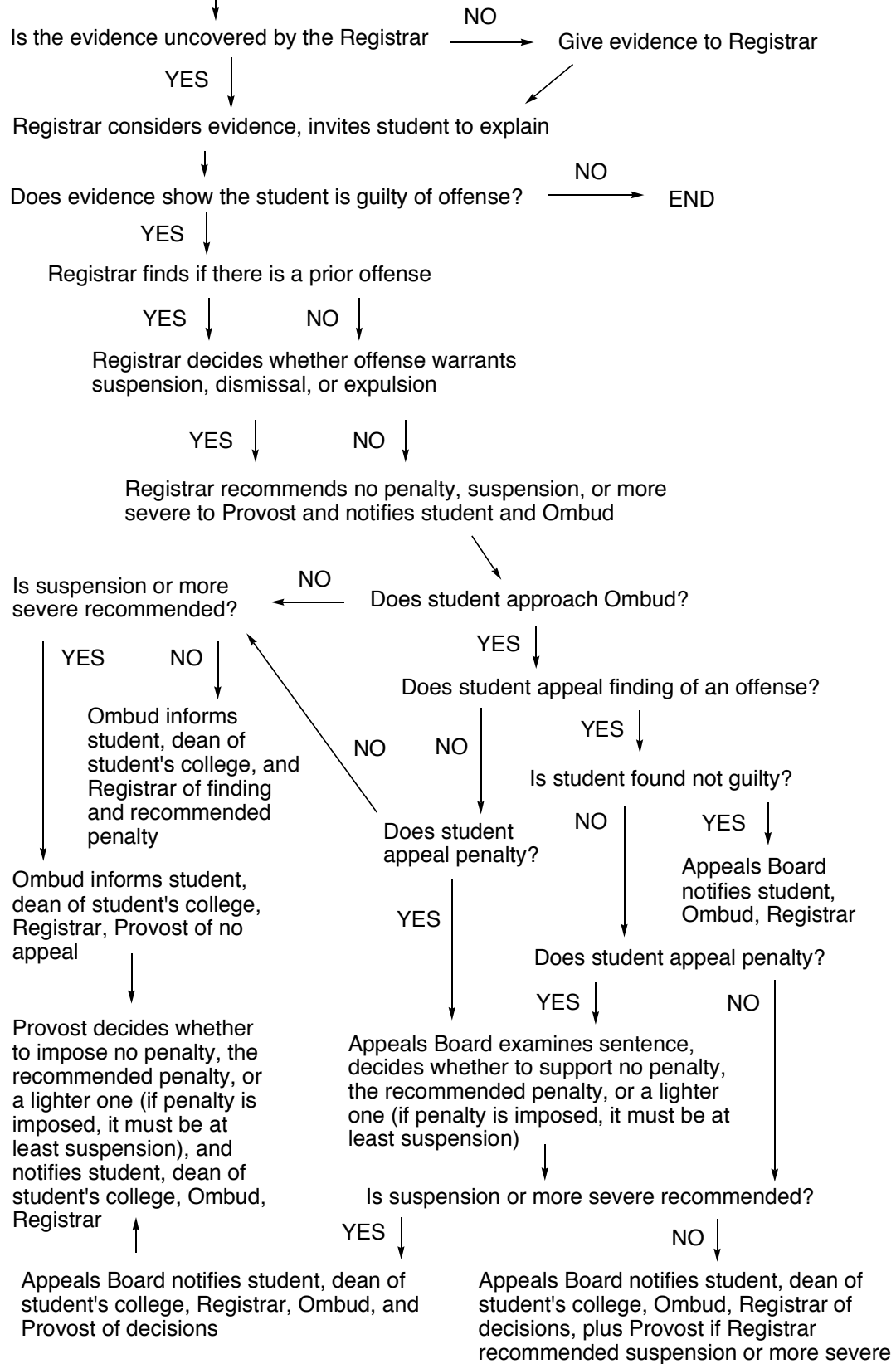


\*If instructor must submit grade before dean has decided on penalty, instructor should submit E, inform student of finding of an offense and that penalty is still being decided.

Student is suspected of offense in a course in which the student is **not** registered or in academic work outside of a course.



Student is suspected of falsifying, attempting to falsify, or otherwise misusing academic records.



As an offense is recorded, the Registrar notices that an inquiry was made about prior offenses *after* the offense now being recorded was committed but *before* it was recorded

Registrar informs dean of student's college

Has student subsequently been found not guilty of offense regarding which the inquiry about prior offenses was made? YES → END

NO

Dean imposes E or F in course in which chronologically subsequent offense occurred, informs instructor and chair

Was a prior offense punished with E or F or worse?

YES

Dean recommends suspension or more severe to Provost and notifies student and Ombud

NO

Does dean believe the chronologically subsequent offense warrants a penalty harsher than the minimum?

NO

Dean informs student, Ombud, Registrar

END

YES

Dean imposes XE or XF or recommends suspension or more severe to Provost and notifies student and Ombud

NO

Ombud informs student, dean, Registrar, and, if suspension was recommended, Provost that there will be no appeal

Does student approach Ombud?

YES

Does student appeal penalty (must be XE or XF or more severe for a second offense, dismissal or more severe for a third offense)?

NO

Provost decides whether to impose the recommended penalty or one less severe than recommended but no less severe than E or F for a second offense or suspension for a third offense, and informs student, dean, Registrar

SUSPENSION OR MORE SEVERE RECOMMENDED

Appeals Board examines sentence, decides whether to support the dean's recommendation or recommend a penalty less severe than the dean's but no less severe than E or F for a second offense or suspension for a third offense

YES

E or F or XE or XF RECOMMENDED

Appeals Board informs student, dean, Registrar, and, if dean recommended suspension, Provost

END